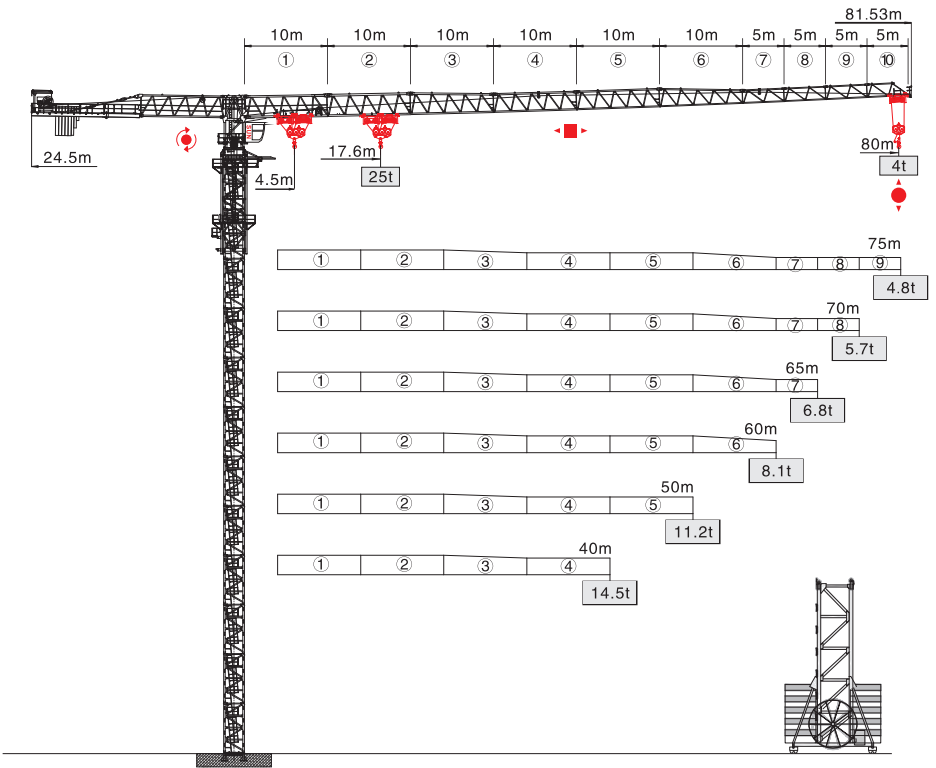
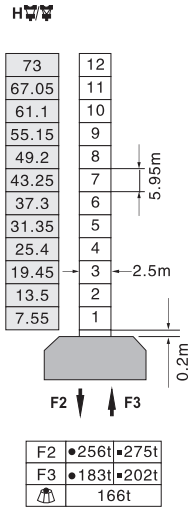


QTP8040

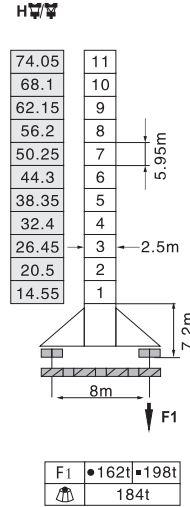


塔身截面 Mast 2.5m × 2.5m

固定式 Stationary

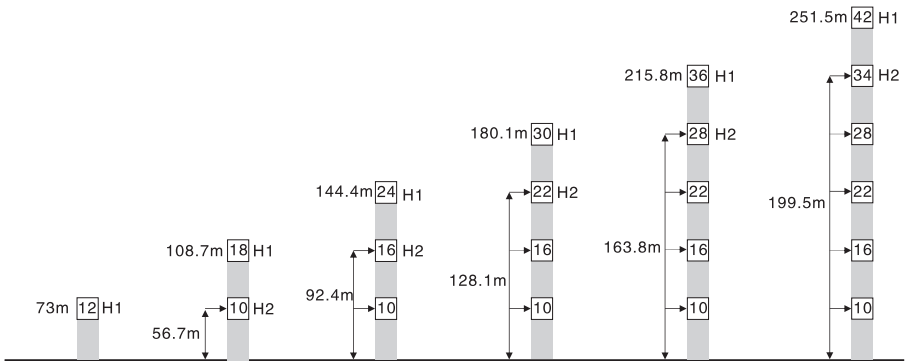


行走式 Traveling



- 工作状态 In service F=固定反力或轮压 Reactions
- 非工作状态 Out of service 自重 Total weight without load and counter weight

附着 Anchorage






H1—塔机吊钩距地面的高度 Height under hook
H2—塔机附着位置距地面的高度 Height of anchorage frame to the ground

① > 251.5m 请向我司咨询 Consult us








载荷特性表 Load Diagrams

起重臂 Jib (m)	倍率 Fall	起重幅度 Range (m)	4.5-17.6	20	25	30	35	40	45	50	55	60	65	70	75	80
			起重量 Load (t)	25	21.43	16.19	12.78	10.38	8.6	7.23	6.13	5.25	4.51	3.89	3.36	2.9
80	IV	起重幅度 Range (m)	12.5		11.88		10.1	8.73	7.63	6.75	6.01	5.39	4.86	4.4	4	
	II		12.5		10.86		9.4	8.24	7.3	6.51	5.85	5.29	4.8			
起重臂 Jib (m)	倍率 Fall	起重幅度 Range (m)	4.5-18.6	20	25	30	35	40	45	50	55	60	65	70	75	
			起重量 Load (t)	25	23.01	17.44	13.81	11	9.36	7.9	6.74	5.8	5.01	4.35	3.79	3.3
75	IV	起重幅度 Range (m)	12.5		10.86		9.4	8.24	7.3	6.51	5.85	5.29	4.8			
	II		12.5		11.59		10.05	8.82	7.82	6.99	6.3	5.7				
起重臂 Jib (m)	倍率 Fall	起重幅度 Range (m)	4.5-19.6	20	25	30	35	40	45	50	55	60	65	70		
			起重量 Load (t)	25	24.52	18.63	14.79	11	10.09	8.55	7.32	6.32	5.49	4.8	4.2	
70	IV	起重幅度 Range (m)	12.5		11.59		10.05	8.82	7.82	6.99	6.3	5.7				
	II		12.5		11.59		10.05	8.82	7.82	6.99	6.3	5.7				
起重臂 Jib (m)	倍率 Fall	起重幅度 Range (m)	4.5-20.8	25	30	35	40	45	50	55	60	65				
			起重量 Load (t)	25	19.98	15.91	13.04	10.92	9.28	7.98	6.92	6.04	5.3			
65	IV	起重幅度 Range (m)	12.5		12.42		10.78	9.48	8.42	7.54	6.8					
	II		12.5		12.42		10.78	9.48	8.42	7.54	6.8					
起重臂 Jib (m)	倍率 Fall	起重幅度 Range (m)	4.5-21.9	25	30	35	40	45	50	55	60					
			起重量 Load (t)	25	21.37	17.05	14.02	11.77	10.03	8.65	7.53	6.6				
60	IV	起重幅度 Range (m)	12.5		11.53		10.15	9.03	8.1							
	II		12.5		11.53		10.15	9.03	8.1							
起重臂 Jib (m)	倍率 Fall	起重幅度 Range (m)	4.5-23.7	25	30	35	40	45	50							
			起重量 Load (t)	25	23.52	18.83	15.53	13.09	11.2	9.7						
50	IV	起重幅度 Range (m)	12.5		11.2		9.7									
	II		12.5		11.2		9.7									
起重臂 Jib (m)	倍率 Fall	起重幅度 Range (m)	4.5-25.6	30	35	40										
			起重量 Load (t)	25	20.74	17.16	14.5									
40	IV	起重幅度 Range (m)	12.5													
	II		12.5													

配重配置表 Counter Weight

		4500kg	3000kg	2000kg	1500kg	 kg
80m	24.5m	5	1	1	1	29000
75m	24.5m	5	1	1	0	27500
70m	24.5m	5	1	0	1	27000
65m	24.5m	5	1	0	0	25500
60m	24.5m	5	0	0	1	24000
50m	20.5m	5	1	1	1	29000
40m	20.5m	5	1	0	1	27000

机构特性 Mechanisms

机构名称 Name	机构型号 Model						功率 Power
起升 Hoisting 	120LVF65	m/min	t	m/min	t	800m 变频控制 Inverter Control	90Kw
		0-45	12.5	0-22.5	25		
		0-90	6.25	0-45	12.5		
变幅 Trolleying 	11BPX80	m/min	0-65			变频控制 Inverter Control	11Kw
回转 Slewing 	RCV185	r/min	0-0.7				3 × 185Nm
	RVF185	r/min	0-0.7			变频控制 Inverter Control	3 × 9Kw
行走 Traveling 	RT544	m/min	0-34			变频控制 Inverter Control	6 × 5.2Kw
电网/Power Supply				380V/50Hz 440V/60Hz (± 5%)			
供电容量/Necessary Power				160KVA/200KVA (traveling)			

※ 本技术参数不受法律约束，技术信息请详见相应技术说明书。

Specifications and data is not legally binding.

For any technical information, please refer to the corresponding instructions.