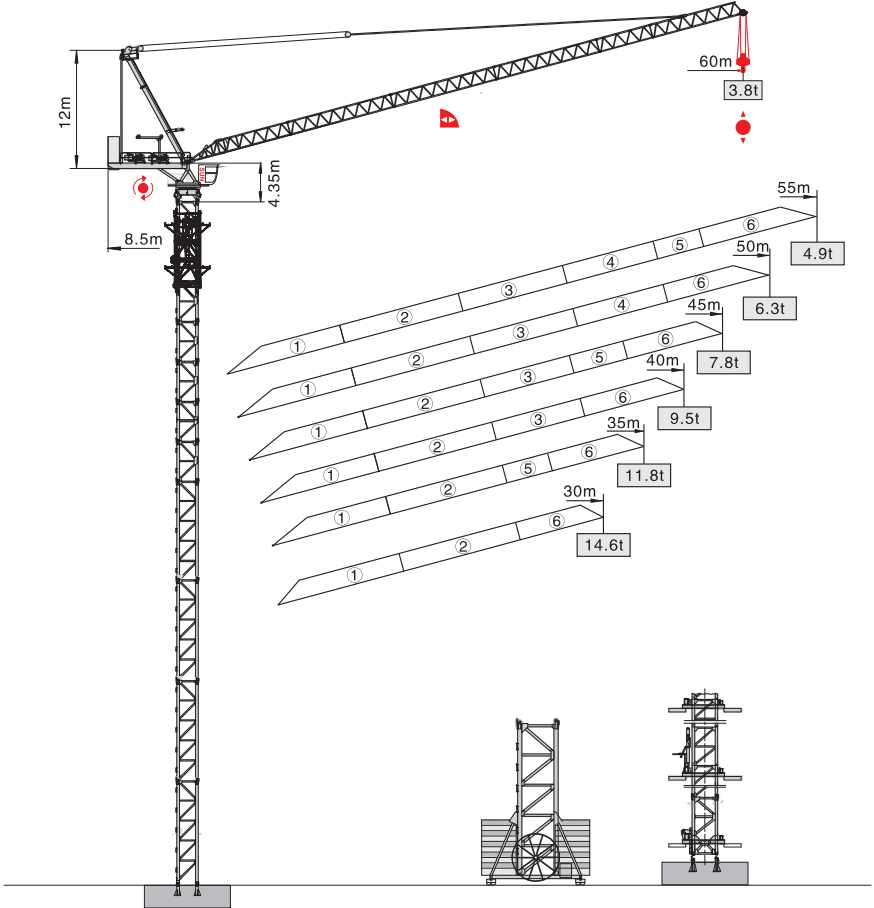
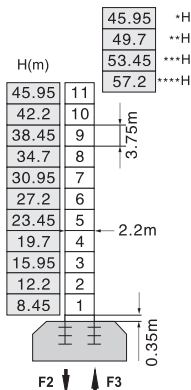


# QTD6038



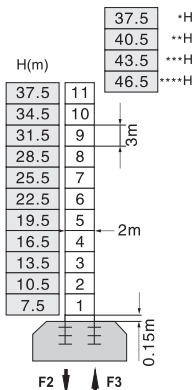
## 塔身截面 Mast 2.2m x 2.2m 2m x 2m

固定式 Stationary



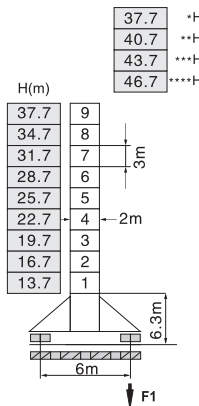
F2	● 180t	■ 315t
F3	● 131t	■ 272t
	⚖️ 83t	

固定式 Stationary



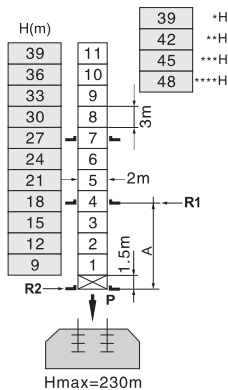
F2	● 172t	■ 308t
F3	● 123t	■ 265t
	⚖️ 75t	

行走式 Traveling



F1	● 120t	■ 152t
	⚖️ 85t	

内爬式 Inner climbing



A	12m	18m
R1	30t	22.5t
R2	26t	19.5t
P	97t	97t
	⚖️ 85t	

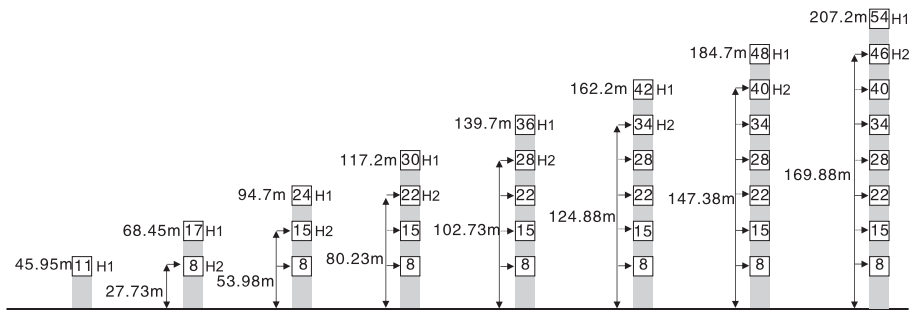
H 臂根铰点下高度 Height under jib hinge shaft 臂架 Jib \*60m \*\*55-50m \*\*\*45-40m \*\*\*\*35-30m

● 工作状态 In service

F=固定反力或轮压 Reactions

■ 非工作状态 Out of service ⚖️ 自重 Total weight without load and counter weight

## 附着 Anchorage 2.2m x 2.2m

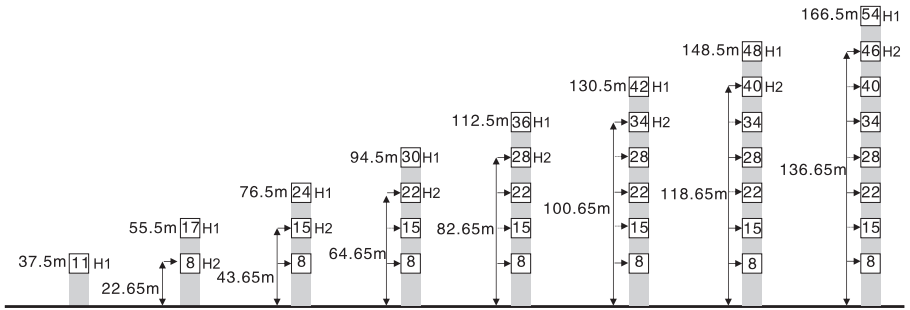


H1—臂根铰点下高度 Height under jib hinge shaft

H2—塔机附着位置距地面的高度 Height of anchorage frame to the ground

① >207.2m 请向我司咨询 Consult us

## 塔身截面 Mast 2m × 2m



H1—塔机吊钩距地面的高度 Height under hook




H2—塔机附着位置距地面的高度 Height of anchorage frame to the ground

① > 166.5m 请向我司咨询 Consult us








## 载荷特性表 Load Diagrams

起重臂 Jib (m)	倍率 Fall	起重幅度 Range (m)	5.5–39.11		40	45	50	55	60
60	II	起重重量 Load (t)	9		8.71	7.09	5.78	4.7	3.8
起重臂 Jib (m)	倍率 Fall	起重幅度 Range (m)	5.1–29.8		35	40	45	50	55
55	III	起重重量 Load (t)	13.5		10.72	8.66	7.05	5.76	4.7
	II	起重重量 Load (t)	9		8.86	7.25	5.96	4.9	
起重臂 Jib (m)	倍率 Fall	起重幅度 Range (m)	4.6–24.29	25	30	35	40	45	50
50	IV	起重重量 Load (t)	18	17.39	13.58	10.85	8.8	7.19	5.9
	III	起重重量 Load (t)	13.5		11.05	9	7.39	6.1	
	II	起重重量 Load (t)	9		7.59	6.3			
起重臂 Jib (m)	倍率 Fall	起重幅度 Range (m)	4.2–24.54	25	30	35	40	45	
45	IV	起重重量 Load (t)	18	17.59	13.78	11.06	9	7.4	
	III	起重重量 Load (t)	13.5		11.26	9.2	7.6		
	II	起重重量 Load (t)	9		7.8				
起重臂 Jib (m)	倍率 Fall	起重幅度 Range (m)	3.7–24.86	25	30	35	40		
40	IV	起重重量 Load (t)	18	17.92	14.1	11.36	9.3		
	III	起重重量 Load (t)	13.5		11.56	9.5			
	II	起重重量 Load (t)	9						
起重臂 Jib (m)	倍率 Fall	起重幅度 Range (m)	3.3–25.08	30	35				
35	IV	起重重量 Load (t)	18	14.33	11.6				
	III	起重重量 Load (t)	13.5		11.8				
	II	起重重量 Load (t)	9						
起重臂 Jib (m)	倍率 Fall	起重幅度 Range (m)	2.8–25.39	30					
30	IV	起重重量 Load (t)	18	14.6					
	III	起重重量 Load (t)	13.5						
	II	起重重量 Load (t)	9						

## 配重配置表 Counter Weight

		4800kg	2900kg	 kg
60	8.5m	6	2	34600
55	8.5m	6	2	34600
50	8.5m	6	1	31700
45	8.5m	6	1	31700
40	8.5m	6	0	28800
35	8.5m	6	0	28800
30	8.5m	6	0	28800

## 机构特性 Mechanisms

机构名称 Name	机构型号 Model						功率 Power
起升 Hoisting 	100LVF45	m/min	t	m/min	t	680m 变频控制 Inverter Control	75Kw
		0-40	9	0-20	18		
		0-80	4.5	0-40	9		
拉臂 Luffing 	75DVF50	min	≤3.0		变频控制 Inverter Control	55Kw	
回转 Slewing 	RCV185	r/min	0-0.7			2 × 185Nm	
	RVF185	r/min	0-0.7		变频控制 Inverter Control	2 × 9Kw	
行走 Traveling 	RT443	m/min	0-24		变频控制 Inverter Control	4 × 4Kw	
电网/Power Supply				380V/50Hz 440V/60Hz (±5%)			
供电容量/Necessary Power				185KVA/205KVA (traveling)			

※ 本技术参数不受法律约束，技术信息请详见相应技术说明书。

Specifications and data is not legally binding.

For any technical information, please refer to the corresponding instructions.