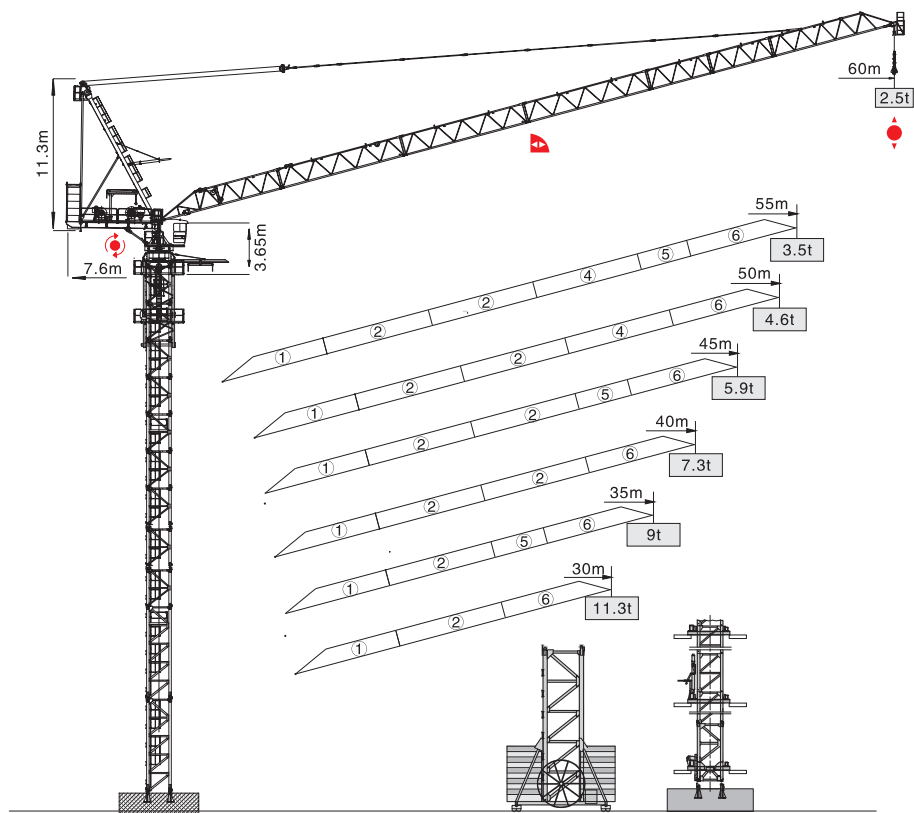
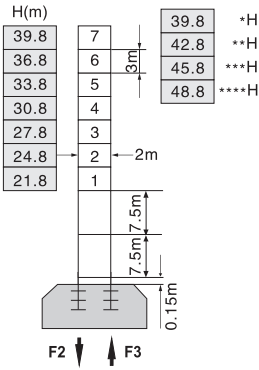


QTD6025



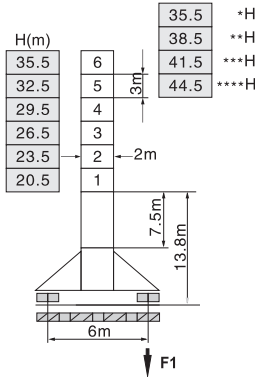
塔身截面 Mast 2m x 2m

固定式 Stationary



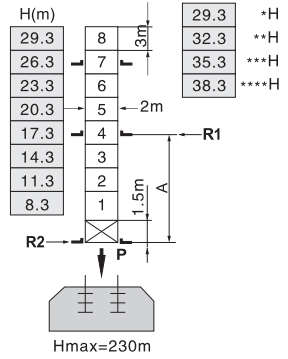
F2	●123t	■228t
F3	●169t	■270t
	⚖️	60t

行走式 Traveling



F1	●102t	■166t
	⚖️	69t

内爬式 Inner climbing

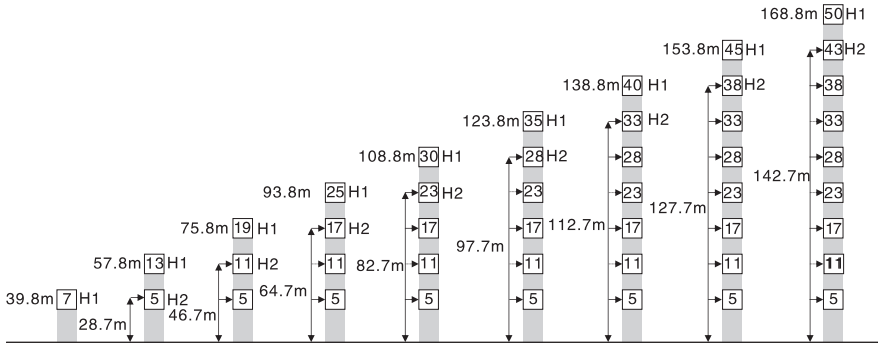


A	12m	18m
R1	46.7t	35.9t
R2	43.3t	32.3t
P	92t	92t
	⚖️	64t

H 臂根铰点下高度 Height under jib hinge shaft 臂架 Jib *60m **55m ***45m ****40-30m

- 工作状态 In service F=固定反力或轮压 Reactions
- 非工作状态 Out of service ⚖️ 自重 Total weight without load and counter weight

附着 Anchorage



H1—臂根铰点下高度 Height under jib hinge shaft

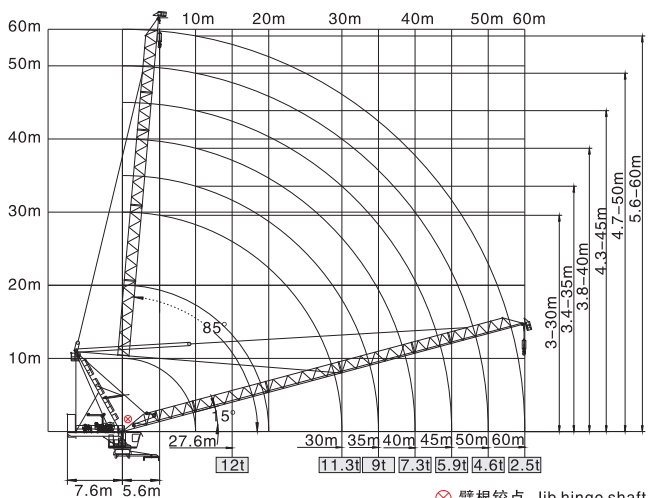
H2—塔机附着位置距地面的高度 Height of anchorage frame to the ground

① > 168.8m 请向我司咨询 Consult us

载荷特性表 Load Diagrams




起重臂 Jib (m)	倍率 Fall	起重幅度 Range (m)	5.6-33.1	35	40	45	50	55	60
60	III	起重重量 Load (t)	9	8.22	6.47	5.12	4.03	3.14	2.4
	II		6			5.22	4.13	3.24	2.5
起重臂 Jib (m)	倍率 Fall	起重幅度 Range (m)	5.1-27.6	30	35	40	45	50	55
	IV	起重重量 Load (t)	12	10.6	8.31	6.59	5.25	4.18	3.3
	III		9	8.41	6.69	5.35	4.28	3.4	
II	6			5.45	4.38	3.5			
起重臂 Jib (m)	倍率 Fall	起重幅度 Range (m)	4.7-27.7	30	35	40	45	50	
	IV	起重重量 Load (t)	12	10.72	8.46	6.77	5.45	4.4	
	III		9	8.56	6.87	5.55	4.5		
II	6			5.65	4.6				
起重臂 Jib (m)	倍率 Fall	起重幅度 Range (m)	4.3-28.1	30	35	40	45		
	IV	起重重量 Load (t)	12	10.93	8.69	7.01	5.7		
	III		9	8.79	7.11	5.8			
	II		6			5.9			
II	6			5.9					
起重臂 Jib (m)	倍率 Fall	起重幅度 Range (m)	3.8-28.3	30	35	40			
	IV	起重重量 Load (t)	12	11.06	8.85	7.2			
	III		9	8.95	7.3				
	II		6						
II	6								
起重臂 Jib (m)	倍率 Fall	起重幅度 Range (m)	3.4-28.4	30	35				
	IV	起重重量 Load (t)	12	11.17	9				
	III		9						
	II		6						
II	6								
起重臂 Jib (m)	倍率 Fall	起重幅度 Range (m)	3-28.6	30					
	IV	起重重量 Load (t)	12	11.3					
	III		9						
II	6								

载荷特性 Load Diagrams










⊗ 臂根铰点 Jib hinge shaft

配重配置表 Counter Weight

		5000kg	5000kg	3000kg	1000kg	 kg
60m	7.6m	1	4	1	2	30000
55m	7.6m	1	4	1	0	28000
50m	7.6m	1	4	0	2	27000
45m	7.6m	1	4	0	0	25000
40m	7.6m	1	3	1	1	24000
35m	7.6m	1	3	0	2	22000
30m	7.6m	1	3	0	2	22000

机构特性 Mechanisms

机构名称 Name	机构型号 Model						功率 Power
		m/min	t	m/min	t		
起升 Hoisting 	75LVF30					650m 变频控制 Inverter Control	55Kw
		0-45	6	0-22.5	12		
		0-90	3	0-45	6		
拉臂 Luffing 	75DVF50	min	≤3.0			变频控制 Inverter Control	55Kw
回转 Slewing 	RCV145	r/min	0-0.7				2×145Nm
	RVF145	r/min	0-0.7			变频控制 Inverter Control	2×7.5Kw
行走 Traveling 	RT443	m/min	0-24			变频控制 Inverter Control	4×4Kw
电网/Power Supply				380V/50Hz 440V/60Hz (±5%)			
供电容量/Necessary Power				156KVA/176KVA (traveling)			

※本技术参数不受法律约束，技术信息请详见相应技术说明书。

Specifications and data is not legally binding.

For any technical information, please refer to the corresponding instructions.