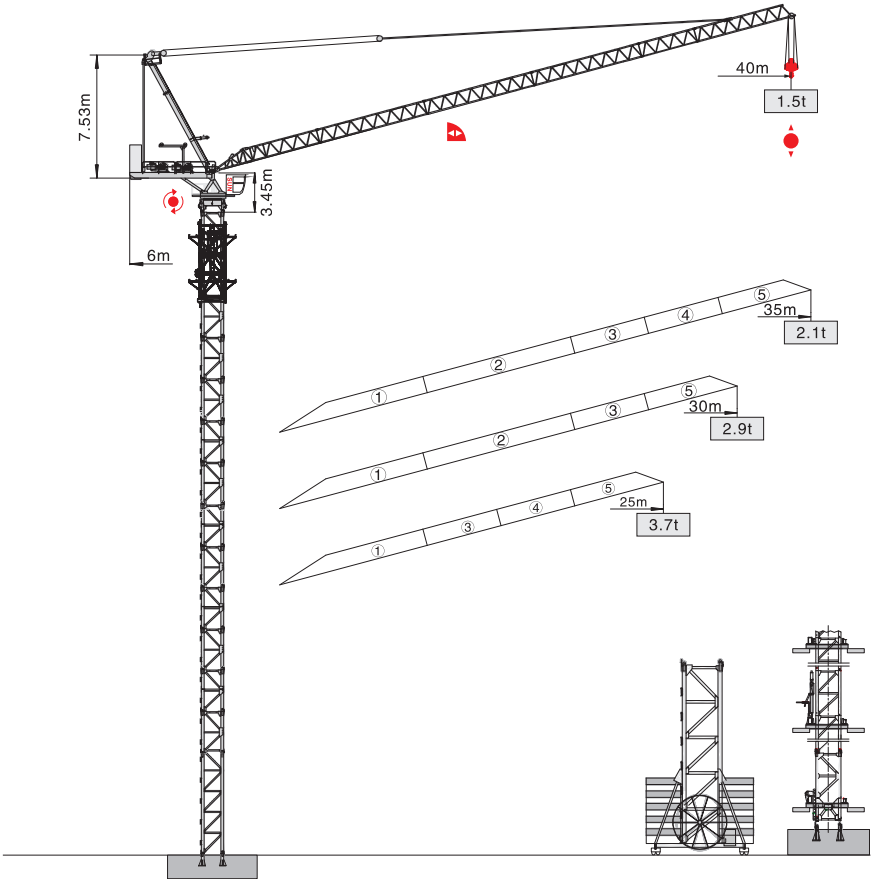


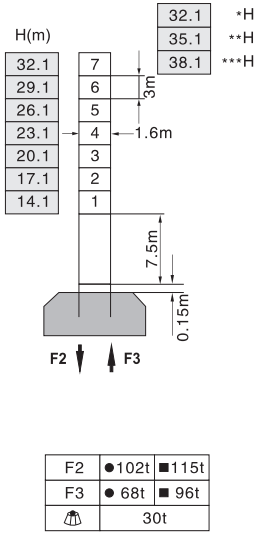
# QTD4015



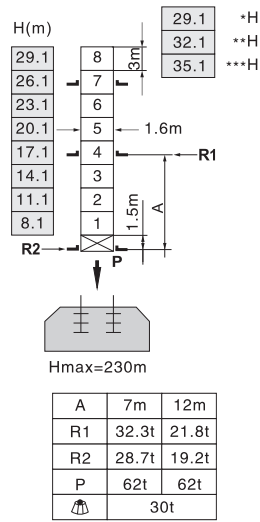


## 塔身截面 Mast 1.2m × 1.2m

固定式 Stationary



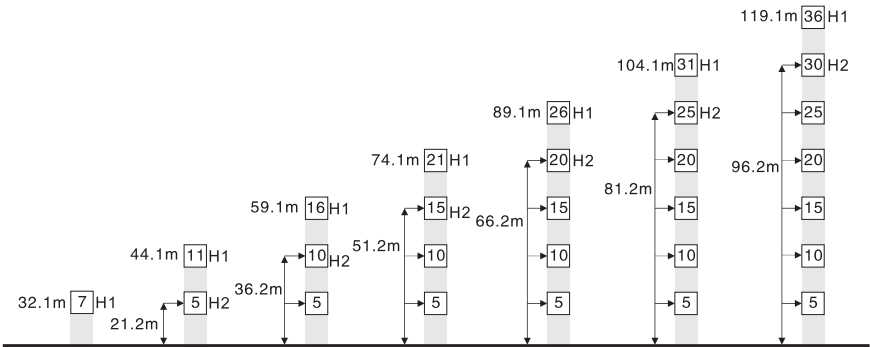
内爬式 Inner climbing



H 臂根铰点下高度 Height under jib hinge shaft 臂架 Jib +40m \*\*35m \*\*\*30-25m

- 工作状态 In service F=固定反力或轮压 Reactions
- 非工作状态 Out of service ⚖ 自重 Total weight without load and counter weight

## 附着 Anchorage



H1—臂根铰点下高度 Height under jib hinge shaft

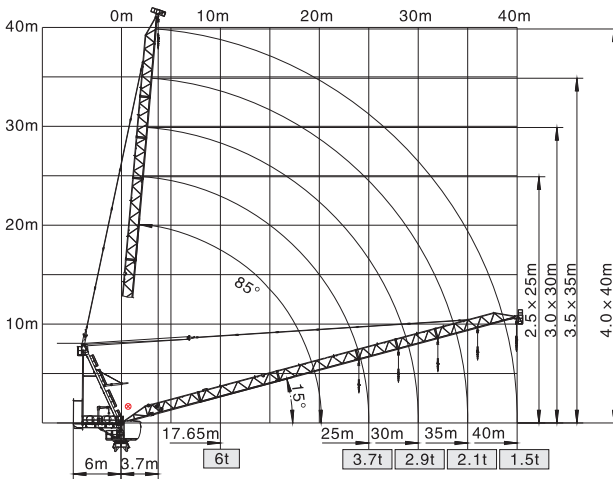
H2—塔机附着位置距地面的高度 Height of anchorage frame to the ground

① > 119.1m 请向我司咨询 Consult us

## 载荷特性表 Load Diagrams


起重臂 Jib (m)	倍率 Fall	起重幅度 Range (m)	3.7-17.65	20	25	30	35	40
40	IV	起重重量 Load (t)	6	5.03	3.57	2.57	1.85	1.3
	II		3			2.77	2.05	1.5
起重臂 Jib (m)	倍率 Fall	起重幅度 Range (m)	3.3-17.68	20	25	30	35	
35	IV	起重重量 Load (t)	6	5.04	3.58	2.6	1.9	
	II		3			2.8	2.1	
起重臂 Jib (m)	倍率 Fall	起重幅度 Range (m)	2.8-17.71	20	25	30		
30	IV	起重重量 Load (t)	6	5.1	3.67	2.7		
	II		3			2.9		
起重臂 Jib (m)	倍率 Fall	起重幅度 Range (m)	2.5-17.73	20	25			
25	IV	起重重量 Load (t)	6	5.11	3.7			
	II		3					

## 载荷特性 Load Diagrams










⊗ 管根铰点 Jib hinge shaft

## 配重配置表 Counter Weight

		5000kg	2000kg	1000kg	 kg
40m	6m	1	5	3	18000
35m	6m	1	5	2	17000
30m	6m	1	5	1	16000
25m	6m	1	5	0	15000

## 机构特性 Mechanisms

机构名称 Name	机构型号 Model						功率 Power
		m/min	t	m/min	t		
起升 Hoisting 	33LVF15	0-40	3	0-20	6	500m 变频控制 Inverter Control	24Kw
		0-80	1.5	0-40	3		
拉臂 Luffing 	33DVF20	min	≤3.0		变频控制 Inverter Control		24Kw
回转 Slewing 	RCV120	r/min	0-0.7				120Nm
	RVF120	r/min	0-0.7		变频控制 Inverter Control		5.5Kw
行走 Traveling 	RT324	m/min	0-24		变频控制 Inverter Control		2 × 5.2Kw
电网/Power Supply				380V/50Hz 440V/60Hz (±5%)			
供电容量/Necessary Power				66KVA/79KVA (traveling)			

※本技术参数不受法律约束，技术信息请详见相应技术说明书。

Specifications and data is not legally binding.

For any technical information, please refer to the corresponding instructions.